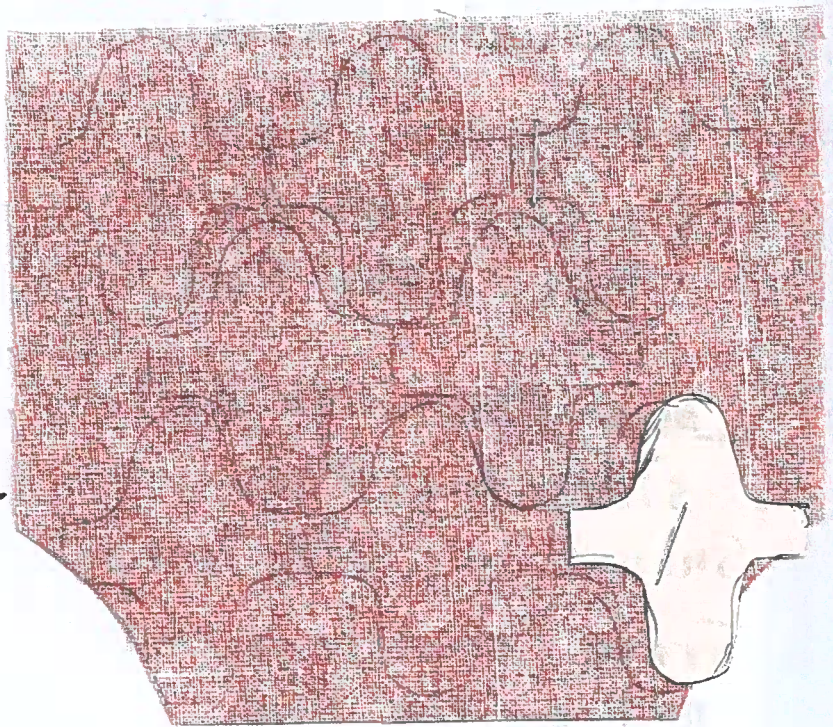


Cotton fabric Cutting Station

Double layer
prewashed +
ironed cotton,
keeping lightest
side up.

Trace pattern
on the cotton.

Cut out using
scissors on the
drawn line.



PUL Cutting Station

(Waterproof fabric)

* Do Not Put ANY *

* Pins in the PUL *

Layer PUL with dull
sides together.

Subcut into $2\frac{3}{4}$ " strips.

Trace template + cut
out on the line.

Flannel Cutting Station

Double layer prewashed
+ ironed flannel.

Subcut to 8" x 2³/₄".

Use batting pieces as
templates on flannel
+ use scissors (not
rotary cutter) to trim
to correct shape.

Stack in 4's for light
to medium weight
flannel or 3's for heavy



Fleece Cutting Station

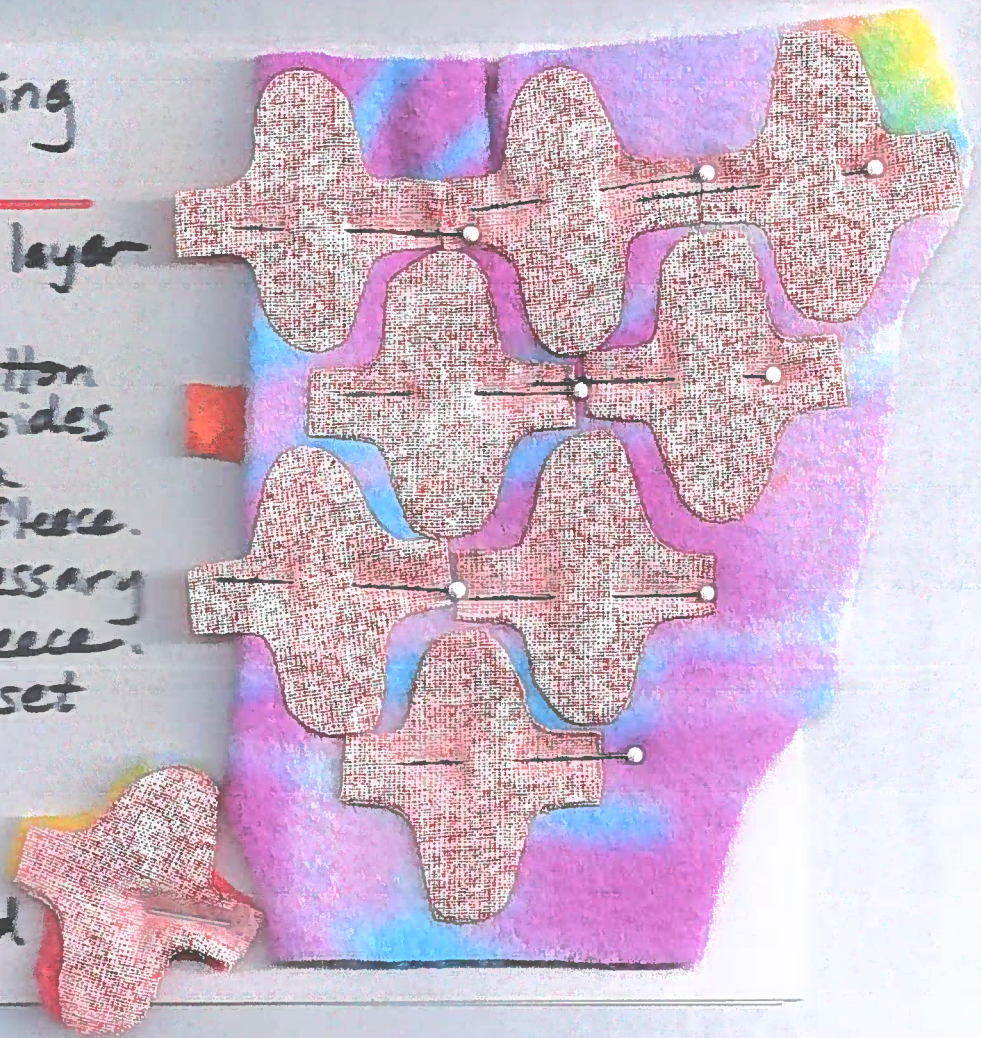
Lay out single layer of fleece.

Place cut out cotton pieces right sides together on a coordinating fleece.

Use pins if necessary + cut out fleece.

Keep matched set together.

≈ 32 fleece / yard



Assembly Station

Layer as shown:

Cotton with right side up

Fleece

PUL with shiny side to fleece

Flannel - 3 or 4

*** NO PINS ***



First Sewing Station - Two Steps

First Step:

Remove back cotton piece from assembly.

Tack $\frac{1}{2}$ " at two ends of flannel / PUL / fleece

Secure stitches

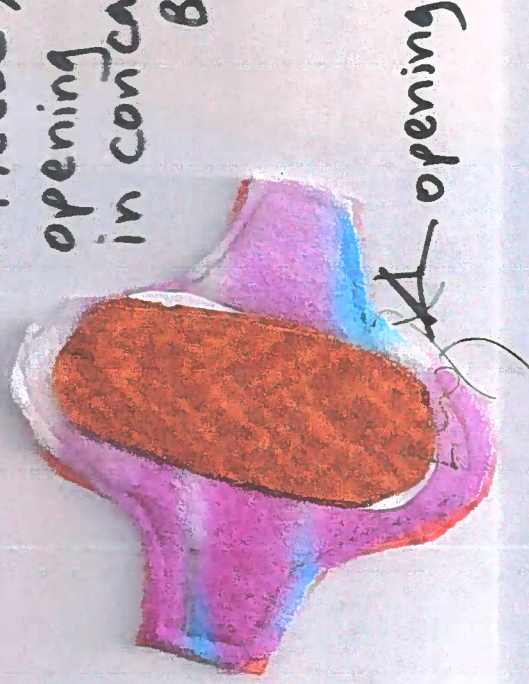


Second Step:

Add cotton piece back to assembly with right side to the fleece.

Sew around the edge catching only the cotton + fleece, leaving an opening for turning in concave area.

Backstitch to secure stitches



Turning Station

Trim corners + curves.

Turn to right side.

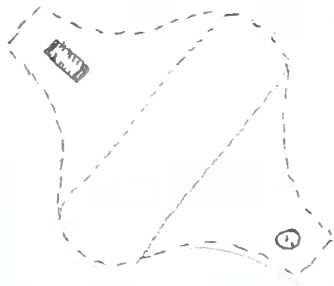
Fold in seam allowance
of open area +
press carefully

Second Sewing Station

Topstitch perimeter beginning at ironed open area.

Continue stitching to add 2 contour lines of stitching at edges of the flannel pieces inside.

Do not sew down center of pad as shown in this example. (minimum number of holes in waterproof PUL)



Buttonhole Station

Make a
buttonhole
on one wing

Add button
to the other
wing on the
cotton side

